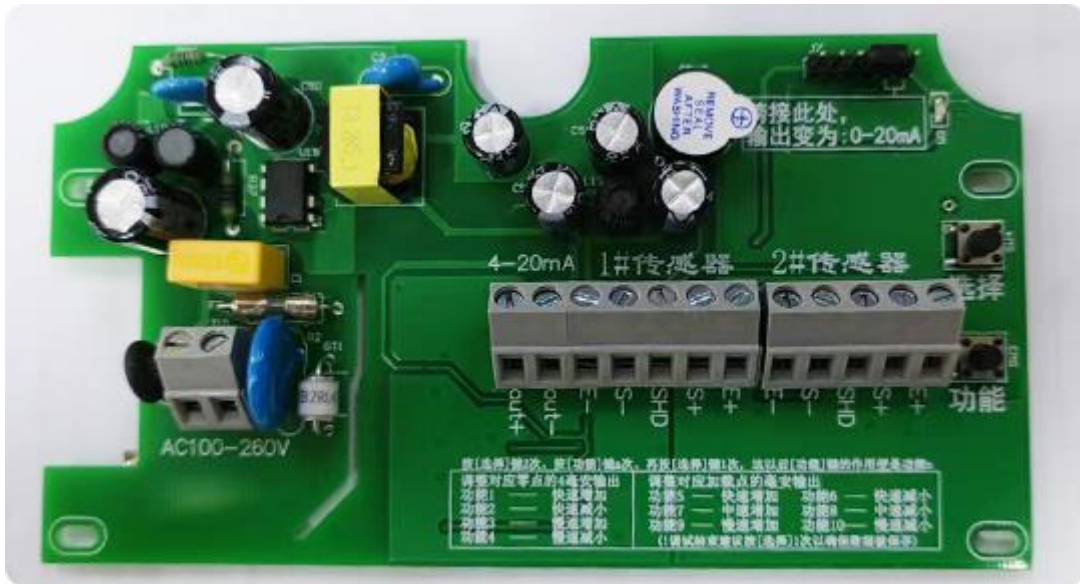
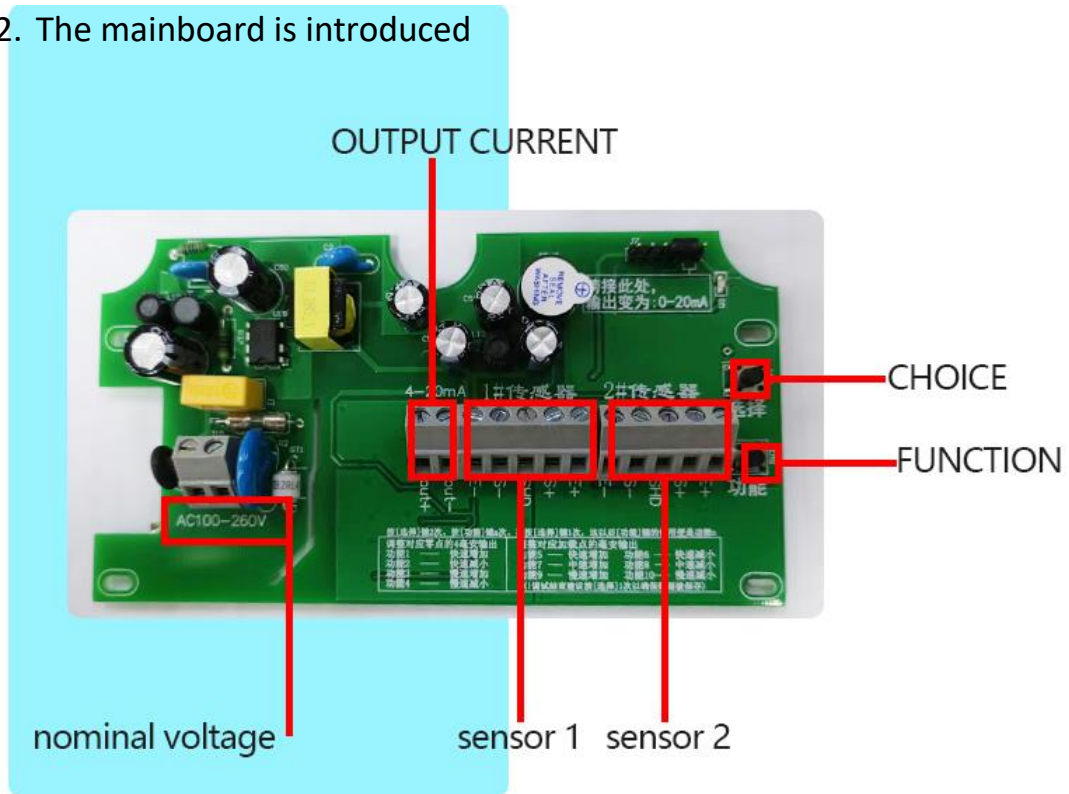


1. real product photo show



2. The mainboard is introduced



3. Debug method

Press the choice (选择) twice, go to function Selection, then press the function (功能), press a few times to select a function, then press the choice (选择) once to confirm. And press function (功能) corresponds to your choice

Adjust 4 mA output corresponding to zero

function once — — turn up fast

function twice — — turn down fast

function 3 times — — turn up slow

function 4 times — — turn down slow

Adjust the current count at the corresponding loading point

function 5 times — — turn up fast

function 6 times — — turn down fast

function 7 times — — turn up

function 8 times — — turn down

function 9 times — — turn up slow

function 10 times — — turn down slow

After the prompt is complete, you are advised to press choice (选择) again to ensure data saving

4.new function

Start add a new function: [Function (功能)] add function 12, you can choose boot zero, zero tracking and any point tracking,

Press the [function (功能)] when the function is 12,

1. hear a beep to indicate that there is no startup zero, zero tracking,

and no arbitrary point tracking

2.Heard two beep, there is boot set zero, zero tracking, no arbitrary

point tracking

3.Hear three beep, no boot set zero, zero tracking, there is any point

tracking

4.Heard four beep, there is a boot set zero, zero tracking, there is any

point tracking